

How can parents help?

1. Check that your son/daughter is making full use of all the resources and support available.

We have worked hard to provide resources that will help with revision. Please check that your son/daughter is using these resources.

- Are they using the revision materials that are on the Learning Portal?
- Have they printed out practice exam questions?
- Are they re reading the playtexts?
- Are they following a realistic revision timetable?
- Are they making full use of lesson time and completing homework tasks?



2. Check that your son/daughter is using effective revision strategies.

It is crucial that students follow the advice they have been given about how to revise. Simply reading through notes is not enough. The key tips for successful revision in Drama are:

- Summarising – Encourage your son/daughter to summarise key area using flashcards, a Mind Map, diagram or revision poster. They could teach you about a key scene from the play or you could test them on their ability to describe the use of theatrical skill for ‘Performer’ questions.
- Regular self-testing –Testing tells you what you know and what you don’t know and therefore where to focus further study. Recalling what you have learned causes your brain to reconsolidate the memory, which strengthens its connections to what you already know and makes it easier to recall in the future.

3. Please encourage your son/daughter to:

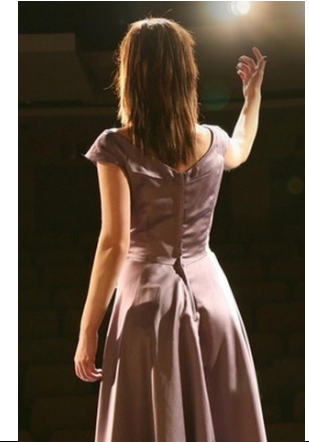
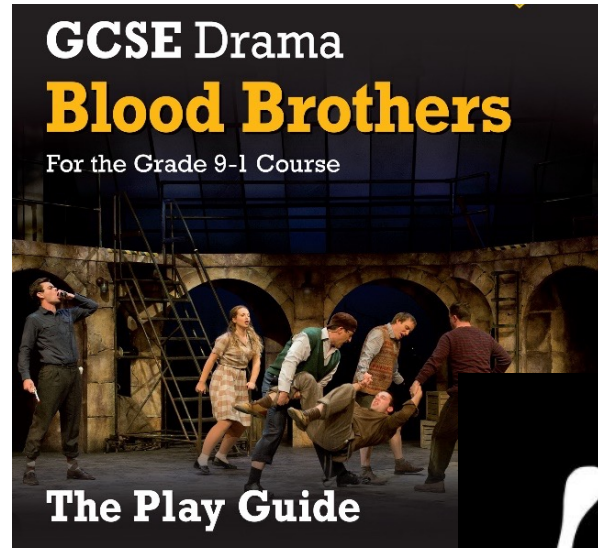
- Regularly use the playtext, past papers and practice questions in the GCSE REVISION FOLDER to check their understanding of the text.
- Focus their revision on ‘weaker’ areas (these should be identified through regular self-testing).
- Ask for support from their teacher when they need it.

Further advice and support is available in the
‘Learning’ section of the school website



GCSE Drama

AQA



live
theatre

Advice for Effective Revision

GCSE Drama

What can you do to improve?



What do I need to revise for the Written Exam?

Section A

Students have to answer **multiple choice questions** on their knowledge and understanding of Theatre maker roles and terminology. • playwright • performer • understudy • lighting designer • sound designer • set designer • costume designer • puppet designer • technician • director • stage manager • theatre manager.

Section B

Tests students knowledge and understanding of the play Blood Brothers. There are four questions which require an **extended written response** from the perspective of a performer and a designer. This section requires students to describe their ideas for how the play could be interpreted practically.

Section C

Students must demonstrate an understanding of Live Theatre and how it communicates by answering **one essay style question** which will analyse and evaluate aspects of design or performance. Students must use clear examples from the live performance they attended.

Use the Learning Portal to access the GCSE REVISION FOLDER.

Go to the 'Learning Portal', 'Drama', and use the 'GCSE Drama Revision' FOLDER. **Here you will find a range of revision resources covering all sections of the written exam.**

[GCSE DRAMA REVISION](#)



GCSE Drama

What can you do to improve?

Resource	What to do
Blank Page Retrieval	The best place to start is by testing yourself. Select a topic from the course and write down everything you can recall. Check your notes to add in anything you have forgotten. This will identify your weak areas. Spend at least one hour per week revising weak areas using the methods outlined below.
OneNote	Use your OneNote folder to access lesson resources and refer to homework tasks. Lesson plans are shared for some sections of the course. Use this resource to help you recall information within your weaker areas of the course.
Scripts & Revision Guides	Use the scripts and the revision guides in the revision folder on the learning portal to make notes on weaker sections of the play. The revision guides also contain exam practice questions and advice on how to answer questions. Follow this link: SCRIPT & REVISION GUIDE
Past Papers	Use the past paper questions that are in the revision folder on the learning portal to test yourself. Hand your answers in to your teacher and ask for feedback on how to improve. Follow this link: PAST PAPERS
BBC GCSE Bitesize	BBC Bitesize has good summaries of the key topics and quizzes where you can test your knowledge. Make sure you select the AQA specification and work through the units • Understanding Drama and Theatre • Performing characters • Theatre Design • Written exam. Follow this link: https://www.bbc.co.uk/bitesize/examspecs/zrnjwty

